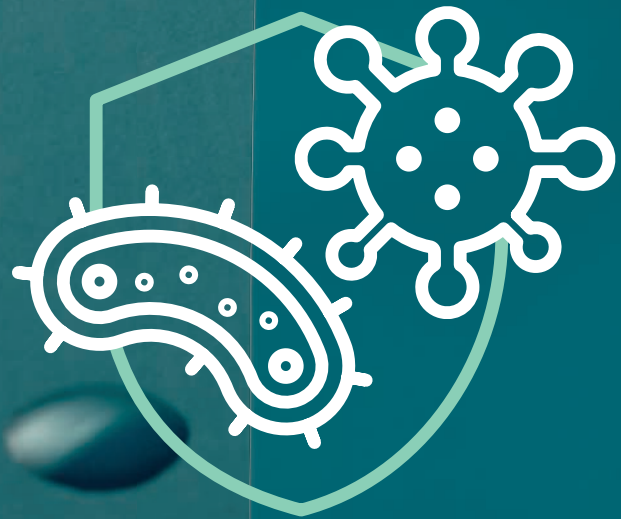


# Mattress Shield



**Hygiene is a key factor in the health sector. Safety and well-being have always been a strong focus for Völker – for your staff, as well as for your patients and residents. In addition to the high quality of Völker mattresses, Shield also offers a combination of proven comfort and enhanced protection for even greater reliability.**

- ✓ Hygienic virus- and bacteria-proof cover with anti-bacterial features.
- ✓ Cover can be washed, dry-cleaned or steam-sterilised in an autoclave.
- ✓ Waterproof zip and sealed seams.
- ✓ Highly elastic 2-zone mattress core providing excellent comfort and pressure relief (Völker Comfort 2000)

## Technical data

**Width × depth × height** 88 × 200 × 12 cm

### Cover:

- Antibacterial features, resistance to bacteria in accordance with DIN EN 13795
- Resistance to water penetration in accordance with DIN EN 20811: > 3000 mm Water vapour transmission in accordance with DIN 53122 / climate B: approx. 800 g/m<sup>2</sup>d.  
Sealed seams, waterproof zip
- Washable: up to 95 °C, tumble dryer-proof, dry cleanable, steam-sterilisable in autoclaves up to 105 °C
- Resistant to blood, urine, oils, fats and disinfectant according to the German Society for Hygiene and Microbiology (DGHM)
- Two reinforced side handles for easy positioning
- Biocompatibility (cytotoxicity) in accordance with DIN EN ISO 10993-5, biocompatibility (irritation + allergisation) in accordance with DIN EN ISO 10993-10
- 100% diffusible polyurethane coating, free from latex and PVC
- 100% elastic, polyester backing material
- Tested for toxic substances in accordance with Ökotex Standard 100
- Flame retardant in accordance with DIN EN ISO 12952-1 & -2 and BS 7175 sec. 3 crib 5 & 7, flame proof in accordance with DIN 597 1 & 2
- Hydrolysis-resistant, manufactured without the use of formaldehyde

### Core (Völker Comfort 2000):

- Highly elastic 2-zone foam mattress with Rubex® cold foam
- Excellent comfort and pressure relief as well as optimal sinking / support behaviour
- Cube-cut technology ensures optimal support of the body
- The super-soft heel comfort zone with a density of 50
- 10 cm border zone reinforcement on the long sides
- Lying surface with a density of 50 kg/m<sup>3</sup>; compression hardness 3.0 kPa
- Tensile strength - DIN EN ISO 1798 - kPa ≥ 80
- Elongation at break - DIN EN ISO 1798 - % ≥ 130
- Compression set - DIN EN ISO 1856 - % - ≤ 6
- Flame behaviour compliant with DIN 75200/FMVSS 302
- Steam vacuum disinfection up to 75 °C
- CFC-free; 100% pure
- Certified according to OEKO-TEX Standard 100, class 1 (products for babies)
- Bottom cover ensures easy changing of sheets and protection from soiling
- Core height: 12 cm

